

### Fiber Optic Fixtures

Fiberstars' fixtures are high quality both in terms of aesthetics and functionality. They are selected to ensure optimum integration with Fiberstars' illuminators and fiber. Fiberstars' fixtures provide a broad range of attractive trims, colors, and shapes to compliment any lighting job and can be applied where traditional fixtures can't.



## *focus:* Creative Possibilities



**Project:** Retail Planners Associates Corporate Offices  
**Location:** Columbus, Ohio  
**Designer:** Retail Planners Associates

# ACCENT FIXTURES

## interior\_fixed\_lensed

# ACCENT FIXTURES

## interior\_fixed\_lensed



interior



<b>FE-1111</b> FIBERESCENT FIXED AIM DOWNLIGHT	
<b>Max. Overall Dimensions:</b> 1.75" OD x 1.38" H (44.4MM OD x 35.1MM H)	
<b>Trim/Flange Dimensions:</b> 1.75" OD x 0.085" H (44.4MM OD x 2.16MM H)	
<b>Aperture Dimensions:</b> 0.72" OD (18.29MM OD)	
<b>Rough-in:</b> 1.375" (34.9MM)	<b>Beam Spread:</b> 15 (MIN.) – 35 (MAX.)
<b>Recess:</b> 3" (76.2MM)	<b>Finish Options:</b> WHITE, BLACK, GOLD
<b>FSPT Fibers:</b> 75 (MAX.)	SILVER
<b>Ferrules:</b> A10516	

**Prime Material:** OTHER METAL  
**Mounting:** SPRING CLIPS INCLUDED

interior



<b>FE-1701</b> FUTURA, FIXED AIM BEVEL TRIM	
<b>Max. Overall Dimensions:</b> 3.31" OD x 2.17" H (84MM OD x 55MM H)	
<b>Trim/Flange Dimensions:</b> 3.31" OD x .25" H (84MM OD x 6.4MM H)	
<b>Aperture Dimensions:</b> 2" OD (50.8MM OD)	
<b>Rough-in:</b> 2.7" (68.7MM)	<b>Beam Spread:</b> 15 (MIN.) – 25 (MAX.)
<b>Recess:</b> 5" (127MM)	<b>Finish Options:</b> WHITE, BLACK, GOLD,
<b>FSPT Fibers:</b> 75 (MAX.)	SILVER, BRUSHED
<b>Ferrules:</b> A10516	CHROME, ALUMINUM,
	ANTHRACITE, GRAPHITE

**Technical Remarks:**  
Beveled, low-profile trim ring. Includes backplate, reflector and ferrule.  
**(A)** FE-3112-CK LENSED MR-16 INSERT  
**(B)** FE-1700 BACKPLATE  
**Mounting:** SPRING CLIPS INCLUDED

interior



<b>FE-1702</b> FUTURA, FIXED AIM RIVET TRIM	
<b>Max. Overall Dimensions:</b> 3.31" OD x 2.17" H (84MM OD x 55MM H)	
<b>Trim/Flange Dimensions:</b> 3.31" OD x .25" H (84MM OD x 6.4MM H)	
<b>Aperture Dimensions:</b> 2" OD (50.8MM OD)	
<b>Rough-in:</b> 2.7" (68.7MM)	<b>Beam Spread:</b> 15 (MIN.) – 25 (MAX.)
<b>Recess:</b> 5" (127MM)	<b>Finish Options:</b> WHITE, BLACK, GOLD,
<b>FSPT Fibers:</b> 75 (MAX.)	SILVER, BRUSHED
<b>Ferrules:</b> A10516	CHROME, ALUMINUM,
	ANTHRACITE, GRAPHITE

**Technical Remarks:**  
Rivet detail, low-profile trim ring. Includes backplate, reflector and ferrule.  
**(A)** FE-3112-CK LENSED MR-16 INSERT  
**(B)** FE-1700 BACKPLATE  
**Prime Material:** OTHER METAL  
**Mounting:** SPRING CLIPS INCLUDED

interior



<b>FE-3112-CK</b> LENSED MR-16 INSERT	
<b>Max. Overall Dimensions:</b> 1.985" OD x 1.85" H (50.4MM OD x 46.99MM H)	
<b>Trim/Flange Dimensions:</b> 1.985" OD x 0.055" H (50.4MM OD x 1.4MM H)	
<b>Aperture Dimensions:</b> 0.81" OD (20.6MM OD)	
<b>Rough-in:</b> 1.88" (47.75MM)	<b>Beam Spread:</b> 15 (MIN.) – 25 (MAX.)
<b>Recess:</b> 4" (102MM)	<b>Finish Options:</b> CHROME
<b>FSPT Fibers:</b> 75 (MAX.)	
<b>Ferrules:</b> A10516	

**Technical Remarks:**  
Reflector and glass lens intended to replace the lamp in a standard MR-16 fixture. Allow up to 2" behind insert for fiber optic cable.  
**Prime Material:** ALUMINUM

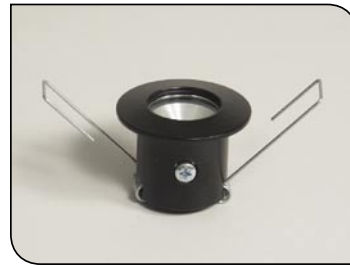
interior



<b>CRE2501</b> FIXED LENS DOWNLIGHT	
<b>Max. Overall Dimensions:</b> 2" OD x 2" H (50.8MM OD x 40MM H)	
<b>Trim/Flange Dimensions:</b> 2" OD x 0.095" H (50.8MM OD x 2.4MM H)	
<b>Aperture Dimensions:</b> 1.05" OD (26.7MM OD)	
<b>Rough-in:</b> 1.575" (40MM)	<b>Beam Spread:</b> 15 (MIN.) – 25 (MAX.)
<b>Recess:</b> 1.378" (35MM)	<b>Finish Options:</b> WHITE, BLACK, SILVER
<b>FSPT Fibers:</b> 75 (MAX.)	GOLD
<b>Ferrules:</b> 8MM, 10MM	

**Prime Material:** OTHER METAL  
**Mounting:** SPRING CLIPS INCLUDED

interior



<b>CRE2502</b> CLEAR OR FROSTED DOWNLIGHT	
<b>Max. Overall Dimensions:</b> 2" OD x 2" H (50.8MM OD x 50.8MM H)	
<b>Trim/Flange Dimensions:</b> 2" OD x 0.095" H (50.8MM OD x 2.4MM H)	
<b>Aperture Dimensions:</b> 1.05" OD (26.7MM OD)	
<b>Rough-in:</b> 1.575" (40MM)	<b>Beam Spread:</b> 48 (MIN.) – 48 (MAX.)
<b>Recess:</b> 1.378" (35MM)	<b>Finish Options:</b> WHITE, BLACK, SILVER,
<b>FSPT Fibers:</b> 75 (MAX.)	GOLD
<b>Ferrules:</b> 8MM, 10MM	

**Prime Material:** OTHER METAL  
**Mounting:** SPRING CLIPS INCLUDED

interior



<b>LBM06100721, LBM06100722</b> LENS ACCENT	
<b>Max. Overall Dimensions:</b> 1.399" OD x 1.457" H (34MM OD x 37MM H)	
<b>Trim/Flange Dimensions:</b> 1.399" OD x 0.079" H (34MM OD x 2MM H)	
<b>Aperture Dimensions:</b> 0.75" OD (19MM OD)	
<b>Rough-in:</b> 1" (25.4MM)	<b>Beam Spread:</b> 15 (MIN.) – 35 (MAX.)
<b>Recess:</b> 1.81" (30MM)	<b>Finish Options:</b> BRASS - 721
<b>FSPT Fibers:</b> 62 (MAX.)	SILVER - 722
<b>Ferrules:</b> 8MM	

**Prime Material:** ALUMINUM  
**Mounting:** SPRING CLIPS INCLUDED

interior



<b>LBM061108301</b> 4-DEGREE LENS	
<b>Max. Overall Dimensions:</b> 0.276" OD x 0.551" H (7MM OD x 14MM H)	
<b>Trim/Flange Dimensions:</b> 0.276" OD x 0.098" H (7MM OD x 2.5MM H)	
<b>Aperture Dimensions:</b> 0.276" OD (7MM OD)	
<b>Rough-in:</b> 0.256" (6.6MM)	<b>Beam Spread:</b> 4 (MIN.) – 4 (MAX.)
<b>Recess:</b> 0.453" (11.5MM)	<b>Finish Options:</b> CLEAR
<b>FSPT Fibers:</b> 1 (MAX.)	
<b>Ferrules:</b> INCLUDED	

**Prime Material:** PLASTIC  
**Mounting:** ADHESIVE

interior



<b>LBM061108304</b> 20-DEGREE LENS	
<b>Max. Overall Dimensions:</b> 0.433" x 0.709" (11MM OD x 18MM H)	
<b>Trim/Flange Dimensions:</b> 0.433" x 0.315" (11MM OD x 8MM H)	
<b>Aperture Dimensions:</b> 0.433" OD (11MM OD)	
<b>Rough-in:</b> 0.315" (8MM)	<b>Beam Spread:</b> 20 (MIN.) – 20 (MAX.)
<b>Recess:</b> 0.394" (10MM)	<b>Finish Options:</b> CLEAR
<b>FSPT Fibers:</b> 1 (MAX.)	
<b>Ferrules:</b> INCLUDED	

**Prime Material:** PLASTIC  
**Mounting:** ADHESIVE

interior



<b>LBM061209118, LBM061209119</b> STEP OR WALL LIGHT	
<b>Max. Overall Dimensions:</b> 2.441" OD x 1.181" H (62MM OD x 30MM H)	
<b>Trim/Flange Dimensions:</b> 2.441" OD x 0.079" H (62MM OD x 2MM H)	
<b>Aperture Dimensions:</b> 1.496" OD (38MM OD)	
<b>Rough-in:</b> 1.654" (42MM)	<b>Beam Spread:</b> 60 (MIN.) – 60 (MAX.)
<b>Recess:</b> 1.102" (28MM)	<b>Finish Options:</b> BLACK - 118
<b>FSPT Fibers:</b> 75 (MAX.)	SILVER - 119
<b>Ferrules:</b> 8MM, 10MM	

**Technical Remarks:**  
Frosted glass cover.  
**Prime Material:** ALUMINUM  
**Mounting:** SCREWS IN FLANGE

# ACCENT FIXTURES

## interior\_fixed\_unlensed

interior



<b>HPDL-40</b> HIGH CUT-OFF SPOTLIGHT, 40-DEGREE	
<b>Max. Overall Dimensions:</b>	3.14" OD x 3" H (79.8MM OD x 76.2MM H)
<b>Trim/Flange Dimensions:</b>	3.14" OD x 0.077" H (79.8MM OD x 1.95MM H)
<b>Aperture Dimensions:</b>	2.02" OD (51.3MM OD)
<b>Rough-in:</b>	2.25" (57.2MM)
<b>Recess:</b>	3" (76.2MM)
<b>FSPT Fibers:</b>	75 (MAX.)
<b>Ferrules:</b>	INCLUDED
<b>Beam Spread:</b>	40 (MIN.) – 40 (MAX.)
<b>Finish Options:</b>	CHROME

**Technical Remarks:**  
Specular reflector fixture provides high cut-off spotlight at a low-price.

**Prime Material:** PLASTIC  
**Mounting:** METAL SPRING CLIPS INCLUDED

interior



<b>HPDL-24</b> HIGH CUT-OFF SPOTLIGHT, 24-DEGREE	
<b>Max. Overall Dimensions:</b>	2.43" OD x 3" H (61.7MM OD x 76.2MM H)
<b>Trim/Flange Dimensions:</b>	2.43" OD x 0.083" H (61.7MM OD x 2.1MM H)
<b>Aperture Dimensions:</b>	1.3" OD (33MM OD)
<b>Rough-in:</b>	1.5" (38.1MM)
<b>Recess:</b>	3" (76.2MM)
<b>FSPT Fibers:</b>	75 (MAX.)
<b>Ferrules:</b>	INCLUDED
<b>Beam Spread:</b>	24 (MIN.) – 24 (MAX.)
<b>Finish Options:</b>	CHROME

**Technical Remarks:**  
Specular reflector fixture provides high cut-off spotlight at a low-price.

**Prime Material:** PLASTIC  
**Mounting:** METAL SPRING CLIPS INCLUDED

interior



<b>HPDL-15</b> HIGH CUT-OFF SPOTLIGHT, 15-DEGREE	
<b>Max. Overall Dimensions:</b>	2.43" OD x 3" H (61.7MM OD x 76.2MM H)
<b>Trim/Flange Dimensions:</b>	2.43" OD x 0.075" H (61.7MM OD x 1.9MM H)
<b>Aperture Dimensions:</b>	0.94" OD (23.9MM OD)
<b>Rough-in:</b>	1" (25.4MM)
<b>Recess:</b>	76.2" (3MM)
<b>FSPT Fibers:</b>	75 (MAX.)
<b>Ferrules:</b>	INCLUDED
<b>Beam Spread:</b>	15 (MIN.) – 15 (MAX.)
<b>Finish Options:</b>	CHROME

**Technical Remarks:**  
Specular reflector fixture provides high cut-off spotlight at a low-price.

**Prime Material:** PLASTIC  
**Mounting:** METAL SPRING CLIPS INCLUDED

interior



<b>CRE1119</b> 90-DEGREE MIRROR	
<b>Max. Overall Dimensions:</b>	0.75" OD x 1.375" H (19MM OD x 34.9MM H)
<b>Trim/Flange Dimensions:</b>	0.75" OD x 1.375" H (19MM OD x 34.9MM H)
<b>Aperture Dimensions:</b>	0.75" OD (19MM OD)
<b>Rough-in:</b>	1" (25.4MM)
<b>Recess:</b>	0.8125" (20.6MM)
<b>FSPT Fibers:</b>	50 (MAX.)
<b>Ferrules:</b>	8MM
<b>Beam Spread:</b>	60 (MIN.) – 60 (MAX.)
<b>Finish Options:</b>	SILVER, BLACK

**Technical Remarks:**  
Aperture and rough-in are rectangular (approximately 0.82" x 1.0"). Fiber enters from the side and reflects off of a mirror.

**Prime Material:** STEEL  
**Mounting:** SCREWS

# ACCENT FIXTURES

## interior\_adjustable\_lensed



interior



<b>FE-2211</b> FIBERSCENT, ADJUSTABLE AIM	
<b>Max. Overall Dimensions:</b>	2" OD x 1.38" H (50.8MM OD x 35.1MM H)
<b>Trim/Flange Dimensions:</b>	2" OD x 0.83" H (50.8MM OD x 2.11MM H)
<b>Aperture Dimensions:</b>	0.753" OD (19.13MM OD)
<b>Rough-in:</b>	1.625" (41.3MM)
<b>Recess:</b>	3" (76.2MM)
<b>FSPT Fibers:</b>	75 (MAX.)
<b>Ferrules:</b>	A10516
<b>Beam Spread:</b>	15 (MIN.) – 25 (MAX.)
<b>Max. Tilt Angle:</b>	+/- 20
<b>Finish Options:</b>	WHITE, BLACK, GOLD, CHROME

**Prime Material:** ALUMINUM  
**Mounting:** METAL SPRING CLIPS INCLUDED

interior



<b>FE-1604</b> FUTURA, ADJUSTABLE AIM, BEVELED TRIM	
<b>Max. Overall Dimensions:</b>	3.75" OD x 7" H (95.2MM OD x 178MM H)
<b>Trim/Flange Dimensions:</b>	3.75" OD x 0.091" H (95.2MM OD x 2.31MM H)
<b>Aperture Dimensions:</b>	1.74" OD (44.2MM OD)
<b>Rough-in:</b>	3.5" (88.9MM)
<b>Recess:</b>	5" (127MM)
<b>FSPT Fibers:</b>	75 (MAX.)
<b>Ferrules:</b>	A10516
<b>Beam Spread:</b>	15 (MIN.) – 25 (MAX.)
<b>Rotation Angle:</b>	360
<b>Max. Tilt Angle:</b>	+/- 30
<b>Finish Options:</b>	WHITE, BLACK, GOLD, SILVER, BRUSHED CHROME, ALUMINUM, ANTHRACITE, GRAPHITE

**Prime Material:** OTHER METAL  
**Mounting:** METAL SPRING CLIPS INCLUDED

interior



<b>CRE1001</b> LENSED FULLY ADJUSTABLE	
<b>Max. Overall Dimensions:</b>	2" OD x 2.441" H (50.8MM OD x 62MM H)
<b>Trim/Flange Dimensions:</b>	2" OD x 1.614" H (50.8MM OD x 41MM H)
<b>Aperture Dimensions:</b>	1.181" OD (30MM OD)
<b>Rough-in:</b>	1.575" (40MM)
<b>Recess:</b>	0.826" (21MM)
<b>FSPT Fibers:</b>	50 (MAX.)
<b>Ferrules:</b>	8MM
<b>Beam Spread:</b>	15 (MIN.) – 25 (MAX.)
<b>Rotation Angle:</b>	360
<b>Max. Tilt Angle:</b>	+/- 40
<b>Finish Options:</b>	WHITE, BLACK, GOLD, CHROME

**Prime Material:** OTHER METAL  
**Mounting:** METAL SPRING CLIPS INCLUDED

interior



<b>CRE2225</b> MINIATURE LENSED SPOTLIGHT	
<b>Max. Overall Dimensions:</b>	1.654" OD x 1.654" H (42MM OD x 42" H)
<b>Trim/Flange Dimensions:</b>	1.181" OD (30MM OD)
<b>Aperture Dimensions:</b>	0.866" OD (22MM OD)
<b>FSPT Fibers:</b>	75 (MAX.)
<b>Ferrules:</b>	10MM THREADED
<b>Beam Spread:</b>	17 (MIN.) – 17 (MAX.)
<b>Rotation Angle:</b>	360
<b>Max. Tilt Angle:</b>	+/- 30°
<b>Finish Options:</b>	SILVER, BLACK

**Prime Material:** STEEL  
**Mounting:** MOUNTING SCREWS

interior



<b>CRE2231</b> MINIATURE ADJUSTABLE LENSED DOWNLIGHT	
<b>Max. Overall Dimensions:</b>	1.25" OD x 1" H (31.8MM OD x 40MM H)
<b>Trim/Flange Dimensions:</b>	1.25" OD x 0.045" H (31.8MM OD x 1.14MM H)
<b>Aperture Dimensions:</b>	0.6" OD (20MM OD)
<b>Rough-in:</b>	1" (25.4MM)
<b>Recess:</b>	1.375" (34.9MM)
<b>FSPT Fibers:</b>	75 (MAX.)
<b>Ferrules:</b>	10MM THREADED
<b>Beam Spread:</b>	28 (MIN.) – 32 (MAX.)
<b>Max. Tilt Angle:</b>	+/- 30
<b>Finish Options:</b>	WHITE, BLACK, CHROME, BRASS

**Prime Material:** OTHER METAL  
**Mounting:** METAL SPRING CLIPS INCLUDED

# ACCENT FIXTURES

## interior\_adjustable\_lensed

# ACCENT FIXTURES

## interior\_adjustable\_unlensed



interior



CRE2224 MINIATURE SPOTLIGHT	
<b>Max. Overall Dimensions:</b> 1.875" OD x 1.5" H (30.2MM OD x 38.1MM H)	
<b>Aperture Dimensions:</b> 0.625" OD (15.9MM OD)	
<b>FSPT Fibers:</b> 75 (MAX.)	<b>Beam Spread:</b> 48 (MIN.) – 48 (MAX.)
<b>Ferrules:</b> 8MM, 10MM	<b>Rotation Angle:</b> 360
	<b>Max. Tilt Angle:</b> 30°
	<b>Finish Options:</b> SILVER, BLACK

**Prime Material:** ALUMINUM  
**Mounting:** MOUNTING SCREWS TO SURFACE

interior



LBM06100621, LBM06100622 LENSED FIXTURE	
<b>Max. Overall Dimensions:</b> 1.399" OD x 2.362" H (34MM OD x 60MM H)	
<b>Trim/Flange Dimensions:</b> 1.339" OD x 0.079" H (34MM OD x 2MM H)	
<b>Aperture Dimensions:</b> 0.75" OD (19MM OD)	
<b>Rough-in:</b> 1.181" (30MM)	<b>Beam Spread:</b> 15 (MIN.) – 35 (MAX.)
<b>Recess:</b> 1.181" (30MM)	<b>Rotation Angle:</b> 360
<b>FSPT Fibers:</b> 62 (MAX.)	<b>Max. Tilt Angle:</b> +/- 40
<b>Ferrules:</b> 8MM	<b>Finish Options:</b> BRASS - 621 SILVER - 622

**Prime Material:** ALUMINUM  
**Mounting:** SPRING CLIPS INCLUDED

interior



LBM06100822 EXTENDED LENSED FIXTURE	
<b>Max. Overall Dimensions:</b> 1" OD x 1.75" H (25.4MM OD x 44.4MM H)	
<b>Aperture Dimensions:</b> 0.75" OD (19MM OD)	
<b>FSPT Fibers:</b> 62 (MAX.)	<b>Beam Spread:</b> 15 (MIN.) – 35 (MAX.)
<b>Ferrules:</b> 8MM, 10MM	<b>Rotation Angle:</b> 360
	<b>Max. Tilt Angle:</b> +/- 90
	<b>Finish Options:</b> STAINLESS STEEL

**Prime Material:** STAINLESS STEEL  
**Mounting:** YOKE

interior



LBMFLEX-LG(L)/LBMFLEX-SM FLEXIBLE TUBE	
<b>Max. Overall Dimensions (SM):</b>	0.43" OD (10.92MM OD) 0.15" ID (3.81MM ID) 0.35" RECESS (8.89MM RECESS)
<b>Max. Overall Dimensions (LG(L)):</b>	0.72" OD (18.29MM OD) 0.35" ID (8.89MM ID) 0.5" RECESS (12.7MM RECESS)
<b>Aperture Dimensions (LGL only):</b>	0.78" OD (19.81MM OD)
<b>FSPT Fibers (SM):</b> 25 (MAX.)	<b>Beam Spread:</b> 48 (MIN.) – 60 (MAX.)
<b>FSPT Fibers (LG(L)):</b> 75 (MAX.)	<b>Rotation Angle:</b> 360
	<b>Max. Tilt Angle:</b> +/- 180
	<b>Finish Options:</b> WHITE, BLACK, GOLD SILVER, CHROME, BRASS

**Technical Remarks:**  
Fixture available in lengths from 4" to 36" (100mm to 1000mm). A lensed version of this fixture is also available (LBMFLEX-LGL).

**Prime Material:** OTHER METAL  
**Mounting:** MOUNTING NUT

interior



LBM061001251 CASELIGHT 1	
<b>Max. Overall Dimensions:</b> 1.723" OD x 1.949" H (44MM OD x 49.5MM H)	
<b>Trim/Flange Dimensions:</b> 1.723" OD x 0.079" H (44MM OD x 2MM H)	
<b>Aperture Dimensions:</b> 0.748" OD (19MM OD)	
<b>Rough-in:</b> 1.457" (37MM)	<b>Beam Spread:</b> 24 (MIN.) – 48 (MAX.)
<b>Recess:</b> 0.689" (17.5MM)	<b>Rotation Angle:</b> 360
<b>FSPT Fibers:</b> 62 (MAX.)	<b>Max. Tilt Angle:</b> +/- 32
<b>Ferrules:</b> 8MM	<b>Finish Options:</b> BLACK

**Prime Material:** ALUMINUM  
**Mounting:** MOUNTING NUT INCLUDED

interior



LBM061001252 CASELIGHT 2	
<b>Max. Overall Dimensions:</b> 1.732" OD x 1.28" H (44MM OD x 32.5MM H)	
<b>Trim/Flange Dimensions:</b> 1.732" OD x 0.079" H (44MM OD x 2MM H)	
<b>Aperture Dimensions:</b> 0.472" OD (12MM OD)	
<b>Rough-in:</b> 1.457" (37MM)	<b>Beam Spread:</b> 48 (MIN.) – 60 (MAX.)
<b>Recess:</b> 0.689" (17.5MM)	<b>Rotation Angle:</b> 360
<b>FSPT Fibers:</b> 62 (MAX.)	<b>Max. Tilt Angle:</b> +/- 32
<b>Ferrules:</b> 8MM	<b>Finish Options:</b> BLACK

**Prime Material:** ALUMINUM  
**Mounting:** MOUNTING NUT INCLUDED

interior



LBM061001253 CASELIGHT 3	
<b>Max. Overall Dimensions:</b> 1.732" OD x 0.984" H (44MM OD x 25MM H)	
<b>Trim/Flange Dimensions:</b> 1.732" OD x 0.079" H (44MM OD x 2MM H)	
<b>Aperture Dimensions:</b> 0.315" OD (8MM OD)	
<b>Rough-in:</b> 1.457" (37MM)	<b>Beam Spread:</b> 48 (MIN.) – 60 (MAX.)
<b>Recess:</b> 0.689" (17.5MM)	<b>Rotation Angle:</b> 360
<b>FSPT Fibers:</b> 62 (MAX.)	<b>Max. Tilt Angle:</b> +/- 32
<b>Ferrules:</b> 8MM	<b>Finish Options:</b> BLACK

**Prime Material:** ALUMINUM  
**Mounting:** MOUNTING NUT INCLUDED

interior



LBM06100524 CASELIGHT 4	
<b>Max. Overall Dimensions:</b> 0.984" OD x 1" H (25MM OD x 25.4MM H)	
<b>Trim/Flange Dimensions:</b> 0.984" OD x 0.059" H (25MM OD x 1.5MM H)	
<b>Aperture Dimensions:</b> 0.571" OD (14.5MM OD)	
<b>Rough-in:</b> 0.787" (20MM)	<b>Beam Spread:</b> 40 (MIN.) – 40 (MAX.)
<b>Recess:</b> 0.945" (24MM)	<b>Finish Options:</b> BLACK
<b>FSPT Fibers:</b> 62 (MAX.)	
<b>Ferrules:</b> 8MM	

**Prime Material:** ALUMINUM  
**Mounting:** MOUNTING NUT INCLUDED

interior



LBM06100624 CASELIGHT 5	
<b>Max. Overall Dimensions:</b> 1.89" OD x 2.087" H (48MM OD x 53MM H)	
<b>Trim/Flange Dimensions:</b> 1.89" OD x 0.079" H (48MM OD x 2MM H)	
<b>Aperture Dimensions:</b> 0.748" OD (19MM OD)	
<b>Rough-in:</b> 1.693" (43MM)	<b>Beam Spread:</b> 24 (MIN.) – 48 (MAX.)
<b>Recess:</b> 1.358" (34.5MM)	<b>Rotation Angle:</b> 360
<b>FSPT Fibers:</b> 62 (MAX.)	<b>Max. Tilt Angle:</b> +/- 32
<b>Ferrules:</b> 8MM	<b>Finish Options:</b> BLACK

**Prime Material:** ALUMINUM  
**Mounting:** MOUNTING NUT INCLUDED

# ACCENT FIXTURES

## interior\_adjustable\_unlensed

interior



<b>LBM06100222</b> LENSLESS AIMABLE FIXTURE	
<b>Max. Overall Dimensions:</b> 1.575" OD x 1.181" H (40MM OD x 30MM H)	
<b>Trim/Flange Dimensions:</b> 1.575" OD x 0.79" H (40MM OD x 20.1MM H)	
<b>Aperture Dimensions:</b> 0.315" OD (8MM OD)	
<b>Rough-in:</b> 1.181" (30MM)	<b>Beam Spread:</b> 48 (MIN.) – 48 (MAX.)
<b>Recess:</b> 1.181" (30MM)	<b>Rotation Angle:</b> 360
<b>FSPT Fibers:</b> 62 (MAX.)	<b>Max. Tilt Angle:</b> +/- 25
<b>Ferrules:</b> 8MM	<b>Finish Options:</b> SILVER

<b>Prime Material:</b> ALUMINUM
<b>Mounting:</b> SPRING CLIPS

# ACCENT FIXTURES

## exterior\_adjustable



exterior



<b>FS210</b> FIBERTWIST	
<b>Max. Overall Dimensions:</b> 0.8" OD x 12" H (20.3MM OD x 305MM H)*	
<b>Aperture Dimensions:</b> 0.524" OD (13.77MM OD)	
<b>FSPT Fibers:</b> 75 (MAX.)	<b>Beam Spread:</b> 60 (MIN.) – 60 (MAX.)
<b>Ferrules:</b> INCLUDED	<b>Rotation Angle:</b> 360
	<b>Max. Tilt Angle:</b> +/- 270
	<b>Finish Options:</b> BLACK

\*FS-912 - 6" extension for FS-210. Segments may be removed if less than 6" is desired.

**Technical Remarks:**  
Mount to standard NPT box or with optional FS-910 Ground Stake. Segments are removable if shorter length is desired. Fixture is unlensed.

<b>Prime Material:</b> PLASTIC
<b>Mounting:</b> 1/2" NPT

exterior



<b>FS-910</b> GROUND MOUNTING STAKE	
<b>Max. Overall Dimensions:</b> 2.05" OD x 6" H (52.07MM OD x 152.4MM H)	
<b>Finish Options:</b> BLACK	

**Technical Remarks:**  
Threaded ground mounting stake for use with FS-210 and FS-310. Screw stake onto bottom of fixture, then depress stake into soil.

<b>Prime Material:</b> PLASTIC
<b>Mounting:</b> 1/2" NPT

exterior



<b>CRE2223</b> STEM MOUNTED SPOTLIGHT	
<b>Max. Overall Dimensions:</b> 4" OD x 3" H (102MM OD x 76.2MM H)	
<b>Trim/Flange Dimensions:</b> 1.772" OD (45MM OD)	
<b>Aperture Dimensions:</b> 1.062" OD (27MM OD)	
<b>FSPT Fibers:</b> 75 (MAX.)	<b>Beam Spread:</b> 15 (MIN.) – 15 (MAX.)
<b>Ferrules:</b> 8MM, 10MM	<b>Rotation Angle:</b> 360
	<b>Max. Tilt Angle:</b> +/- 30
	<b>Finish Options:</b> STAINLESS STEEL

**Technical Remarks:**  
Fixture is lensed.

<b>Prime Material:</b> STAINLESS STEEL
<b>Mounting:</b> SCREWS

exterior



<b>CRE2610</b> BURIED ADJUSTABLE SPOTLIGHT	
<b>Max. Overall Dimensions:</b> 3.78" OD x 4" H (96MM OD x 102MM H)	
<b>Trim/Flange Dimensions:</b> 3.78" OD x 0.413" H (96MM OD x 10.5MM H)	
<b>Aperture Dimensions:</b> 1.654" OD (42MM OD)	
<b>Rough-in:</b> 3.543" (90MM)	<b>Beam Spread:</b> 17 (MIN.) – 17 (MAX.)
<b>Recess:</b> 6.5" (165MM)	<b>Rotation Angle:</b> 360
<b>FSPT Fibers:</b> 75 (MAX.)	<b>Max. Tilt Angle:</b> +/- 15
<b>Ferrules:</b> 8MM, 10MM	<b>Finish Options:</b> STAINLESS STEEL

**Technical Remarks:**  
Spotlight is adjustable for both tilt and rotation from above the ground WITHOUT uninstalling fixture. Fixture is lensed.

<b>Prime Material:</b> STAINLESS STEEL
<b>Mounting:</b> IN GROUND

exterior



<b>LBM06120420</b> ROUND, RECESSED ADJUSTABLE ACCENT	
<b>Max. Overall Dimensions:</b> 2.559" OD x 1.654" H (65MM OD x 42MM H)	
<b>Trim/Flange Dimensions:</b> 2.559" OD x 0.354" H (65MM OD x 9MM H)	
<b>Aperture Dimensions:</b> 0.75" OD (19MM OD)	
<b>Rough-in:</b> 1.575" (40MM)	<b>Beam Spread:</b> 15 (MIN.) – 35 (MAX.)
<b>Recess:</b> 3" (76.2MM)	<b>Rotation Angle:</b> 360
<b>FSPT Fibers:</b> 75 (MAX.)	<b>Max. Tilt Angle:</b> +/- 30
<b>Ferrules:</b> 8MM, 10MM	<b>Finish Options:</b> STAINLESS STEEL

**Technical Remarks:**  
Adhere inside PVC pipe or directly into wall or floor with Fiberstars silicon adhesive (FS-136 or FS-138). Fixture is lensed.

<b>Prime Material:</b> STAINLESS STEEL
<b>Mounting:</b> IN GROUND