



**Project:** Coastal Banc  
**Location:** Houston, Texas  
**Designer:** Linda Cummings Lighting Consultants, Inc.  
and Tara Wasmuth, Gensler, Houston

## STAR KITS

### **A complete solution in one box.**

Star Kits provide a complete solution for small and medium size star ceilings, floors or walls. These kits provide everything you need including an illuminator, fiber optic cable, drill bits, adhesive, and complete installation instructions. Star kits B and C also include additional fiber strands that are animated for a 7 to 14 foot long shooting star. The fiber optic cables are pre-ported at the factory to greatly simplify and accelerate the installation.

Most star points are created with Star 34/50, a cable designed specifically for star ceiling applications (shooting stars use our 0.75mm fiber). This cable combines 34 strands of end emitting fibers in each jacket, distributed as follows:

- 24 strands of 0.75mm fiber
- 7 strands of 1.0mm fiber
- 3 strands of 1.5mm fiber

The larger diameter fibers are brighter than the smaller diameter fibers. When installed into a ceiling, these cables replicate the differing magnitudes (brightness) of natural stars.

# STAR KITS

## suggestions\_specifications



### SUGGESTIONS

#### DENSITY

The appropriate density, or quantity of points in an area, is highly subjective. Most ceilings use between 1 and 6 points of light per square foot of surface area. Lower ceilings (less than 10 feet high) require more density than higher ceilings (more than 15 feet high) in order to look natural. Sparser layouts tend to look more natural, and denser layouts tend to look more glitzy.

#### DISTRIBUTION

Natural stars look splotchy. To best recreate the beauty of the natural sky, we urge you to vary the spacing between points. Some areas should have several stars together and other areas very few stars. Consider incorporating a dense Milky Way section into your project.

#### CONSTELLATIONS

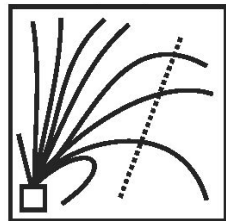
You may want to have a few stars that form a constellation. Use several larger strands of fiber in the same hole to make a constellation star point that is brighter than the other star points.

#### INSTALLATION

Install each illuminator in an accessible location that allows each cable to reach the ceiling with 3 feet of slack. Drill a hole through the ceiling and, working from above the ceiling, insert the proper size fiber through the hole, allowing it to protrude several inches into the room. Secure the fiber in place with adhesive. Allow the adhesive to dry. Clip the fibers to approximately 3/8 from the ceiling and apply a light coat of latex paint over the ceiling and fibers (optional). After the paint has dried, clip the fibers to 1/8, or to 1/4 if you prefer to allow for a future repainting and re-clipping.



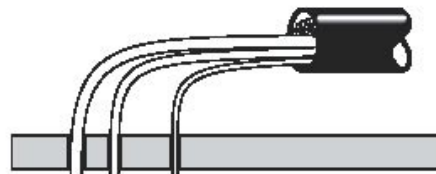
Plan View:



**Technical Remarks:**

LOCATE ILLUMINATOR(S) IN AN ACCESSIBLE, VENTILATED AREA. ROUTE CABLES TO LOCATIONS OF STAR POINTS. COIL EXCESS CABLE IF NEEDED. OPTIONAL SHOOTING STAR IS SHOWN.

Section View:



**Installation Sequence:**

PAINT CEILING, DRILL HOLES, INSERT FIBERS, ADHERE FIBERS IN PLACE, LIGHTLY REPAINT CEILING, TRIM FIBERS TO 1/8". LEAVING AN ADDITIONAL 1/8" WOULD ALLOW FOR FUTURE REPAINTING OF THE CEILING.

300 total points



### STAR KIT A

**Description:**  
Small Star Kit

**Specifications:**

**Intensity:** 300 TOTAL POINTS  
**Max Lit Length:** 9 CABLES OF STAR 34/50, 10 FEET LONG  
**Mounting:** DRILL HOLE, INSERT FIBER, SECURE WITH EPOXY OR ADHESIVE  
**Illuminator:** FS11L-SPW/NC-120-005  
**Technical Remarks:** SPARKLE WHEEL INCLUDED

500 total points



### STAR KIT B

**Description:**  
Medium Star Kit with shooting star

**Specifications:**

**Intensity:** 500 TOTAL POINTS  
**Max Lit Length:** 9 CABLES OF STAR 34/50, 10 FEET LONG; 200 SHOOTING STAR CABLES, 10 FEET LONG  
**Mounting:** DRILL HOLE, INSERT FIBER, SECURE WITH EPOXY OR ADHESIVE  
**Illuminator:** FS1L-SPW/NC-120  
**Technical Remarks:** SPARKLE WHEEL INCLUDED

800 total points



### STAR KIT C

**Description:**  
Large Star Kit with 2 shooting stars

**Specifications:**

**Intensity:** 800 TOTAL POINTS  
**Max Lit Length:** 18 CABLES OF STAR 34/50, 20 FEET LONG; 200 SHOOTING STARS, 20 FEET LONG  
**Mounting:** DRILL HOLE, INSERT FIBER, SECURE WITH EPOXY OR ADHESIVE  
**Illuminator:** FS1L-SPW/NC-120  
**Technical Remarks:** SPARKLE WHEEL INCLUDED