

Tools and Accessories

Fiberstars selection of accessories provides everything you need to simplify a fiber optic installation and helps complete the light design you've always wanted.



focus: Superior

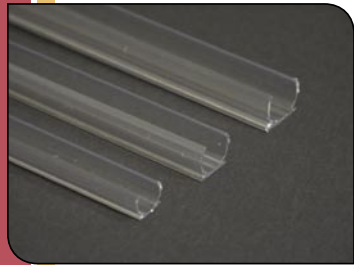


Project: Anger Fountain
Location: Erfurt, Germany
Designer: Grobe and GTL, Kassel with Anger Plan, Erfurt, Germany

TOOLS AND ACCESSORIES

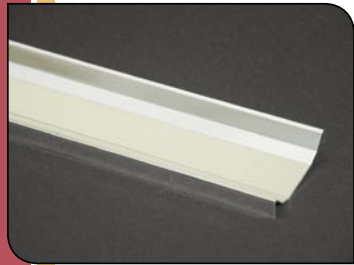
anchors

clear track



TRK-U3/8, TRK-U1/2, TRK-5/8	
Description:	U-TRACK, 6' LENGTH
Dimensions:	TRK-U3/8: 0.46" SQUARE X 6' LONG (11.7MM X 1.83MM) TRK-U1/2: 0.59" SQUARE X 6' LONG (15MM X 1.83MM) TRK-U5/8: 0.63" SQUARE X 6' LONG (16MM X 1.83MM)
Technical Remarks:	PVC EXTRUSION FOR MOUNTING SIDE-LIT CABLE IN STRAIGHT OR SLIGHTLY CURVED LINES. TRK-U3/8: BPAK-40 AND BPAK-50, TRK-U1/2: BPAK-75 AND BPAK-100, TRK-U5/8: BPAK-150

reflector track



RFL-4	
Description:	REFLECTIVE TRACK, 5' LENGTH. DIMENSIONS: 1 7/8"W X 5'L X 5/16"H
Technical Remarks:	REFLECTIVE TRACK FOR USE WITH BPAK FIBER.

p-clips



HI-102, HI-103, HI-104, HI-105	
Description:	P-CLIPS
Dimensions:	HI-102: 0.48"W X 0.84"L X 0.38"H (12MM X 21MM X 10MM) HI-103: 0.48"W X 1"L X 0.48"H (12MM X 25MM X 12MM) HI-104: 0.48"W X 1.2"L X 0.62"H (12MM X 30MM X 16MM) HI-105: 0.48"W X 1.2"L X 0.68"H (12MM X 30MM X 17MM)
Technical Remarks:	PVC CLIPS FOR MOUNTING SIDE-LIT AND SECURING VERY SMALL FSPT IF DESIRED. HI-102: BPAK-15 AND SS-15, HI-103: BPAK-40, BPAK-50 AND SS-50, HI-104: BPAK-75 AND BPAK-100, HI-105: BPAK-150

TOOLS AND ACCESSORIES

anchors



epoxy



FS-115	
Description:	EPOXY KIT
Technical Remarks:	5 MINUTE EPOXY APPROVED FOR ADHERING FERRULES TO FIBER AND FIBER TO SURFACES.

double-sided tape



FS-131	
Description:	DOUBLE-SIDED TAPE
Dimensions:	5/16" WIDE X 165' LONG (8MM X 50M)
Technical Remarks:	USED TO TEMPORARILY HOLD FIBER OR TRACK TO A SURFACE. USE WITH FS-136 SILICONE ADHESIVE.

silicone



FS-136	
Description:	SILICONE ADHESIVE
Technical Remarks:	APPROVED FOR ADHERING FIBER AND TRACK; 10.3 OZ TUBE (300ML)

silicone

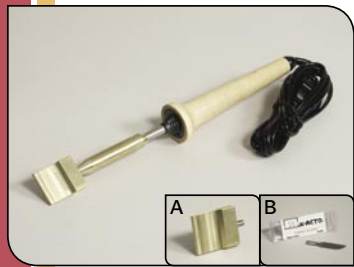


FS-138	
Description:	SILICONE ADHESIVE, CASE
Technical Remarks:	APPROVED FOR ADHERING FIBER AND TRACK; CASE OF 24 - 10.3 OZ TUBES (300ML)

TOOLS AND ACCESSORIES

cutting tools

light duty

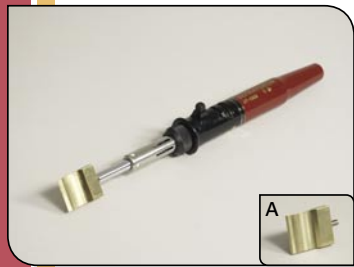


FS-118

Description: LIGHT-DUTY HOT KNIFE

Technical Remarks:
60 WATT ELECTRIC HOT KNIFE FOR PORTING FIBER INTO FERRULE PORT TIPS. NEW SHOVEL TYPE BLADE MAKES FIBER CUTTING EASIER.
REPLACEMENT BLADES:
(A) 01-15001-00 (NEW STYLE)
(B) FS-118A (OLD STYLE)

butane

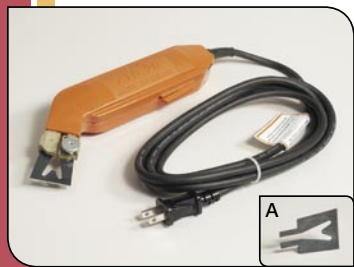


FS-163

Description: STANDARD BUTANE HOT KNIFE

Technical Remarks:
BUTANE HOT KNIFE FOR PORTING BUNDLES OF FIBER INTO FERRULES OR PORT TIPS. SHOVEL TYPE BLADE MAKES FIBER CUTTING EASIER.
REPLACEMENT BLADE:
(A) 01-15001-00 (NEW STYLE)

heavy duty



LB-HK-3

Description: HEAVY DUTY HOT KNIFE

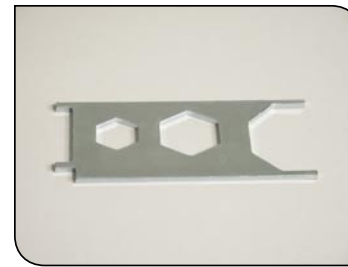
Technical Remarks:
CONTRACTOR GRADE ELECTRIC HOT KNIFE FOR PORTING BUNDLES OF FIBER INTO FERRULES OR PORT TIPS. UNIQUE BLADE DESIGN ALLOWS FOR BETTER HEAT DISTRIBUTION.
REPLACEMENT BLADE:
(A) LB-HK-3-BLADE

TOOLS AND ACCESSORIES

installation tools



lens wrench



FS-117

Description: LENS WRENCH FOR LNS FIXTURE

Technical Remarks:
USED TO TIGHTEN LENS ONTO LNS HOUSING

paver wrench



FS-915

Description: LENS WRENCH FOR FS-710 AND FS-711 FIXTURE

Technical Remarks:
USED TO TIGHTEN LENS ONTO PAVER FIXTURE

drill bits



FS-DP4

Description: STAR CEILING DRILL BIT KIT

Technical Remarks:
SET OF (4) BITS IN THREE SIZES FOR USE DRILLING THROUGH GYPSUM (DRYWALL) OR CELLULOSE (CEILING TILE) CEILINGS