



**RUUD**<sup>®</sup>  
**LIGHTING**

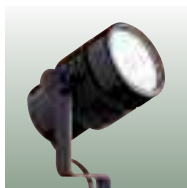
*Dependability... DIRECT!*

The versatility  
and quality  
of our products  
make it clear:  
Ruud Lighting  
is the perfect  
choice, day  
or night,  
to enhance  
outdoor  
environments.

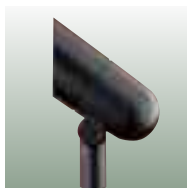
# The Natural Choice for Landscape Illumination

## Directional floodlights

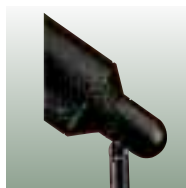
Order lamp separately



**GL20**  
MR16 bi-pin base,  
20W max., 2.4" O.D.  
BK



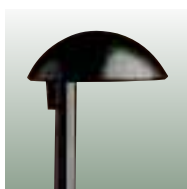
**GL80**  
MR16 bi-pin base,  
50W max., 2.9" O.D.  
BK



**GL81**  
PAR36, 75W max.,  
5.5" O.D.  
BK

## Path lighting

Includes 18W #1141 lamp



**GL09**  
18.3" H  
BK



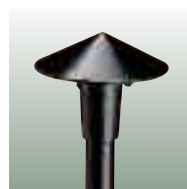
**GL19**  
17" H  
BK



**GL41**  
22.3" H  
BK



**GL44**  
17.5" H  
BK



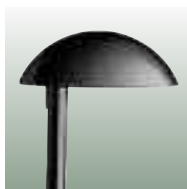
**GL45**  
12.3" H  
BK



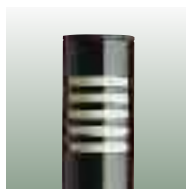
**GL47**  
20" H  
BK



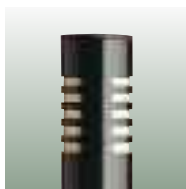
**GL48**  
20" H  
BK



**GL49**  
21.5" H  
BK



**GL60**  
Single-directional bollard  
14" H, 2.5" O.D.  
BK



**GL62**  
Dual-directional bollard  
14" H, 2.5" O.D.  
BK

## Step lighting

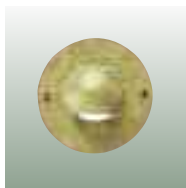
Lamp included (except GL55)



**GL50**  
13W, #93 lamp  
5" x 3.3"  
BK



**GL51**  
Two 13W, #93 lamps  
9.5" x 3.3"  
BK

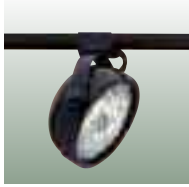


**GL55**  
MR16 bi-pin base, 20W  
(order lamp separately)  
4.3" Dia.  
BK, SPB

# Outdoor track system

---

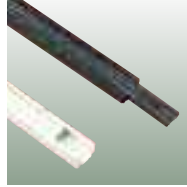
Unique low-voltage track system that can be installed outdoors. Lamp not included; order cable separately



**TL013**  
PAR36, 50W max.  
4.6" O.D.  
BK, WH

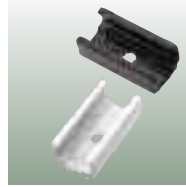


**TMC2E-L**  
MR16 bi-pin base,  
50W max., 2.4" O.D.  
BK, WH



**TRA4 or TRA8**  
BK, WH

**Outdoor Track**  
Colorfast  
DeltaGuard®  
finished  
aluminum track  
will not discolor  
from exposure to  
sunlight or harsh  
weather. Track  
extrusion only;  
order cable sepa-  
rately. Available  
in 4' or 8'  
lengths.



**TRA1**  
1.5"  
BK, WH

## **Spine/Cable Holder**

The outdoor track  
lights also can be  
attached directly  
to cable using  
this aluminum  
spine/cable hold-  
er. The hole  
allows the holder  
to be screw-  
mounted to trees  
and wooden  
structures.

# Well lights

Open PVC or sealed die cast aluminum well lights. Order lamp separately



**GL23**  
Open, PAR36, 50W max., light adjustable up and down tube  
5.6" O.D. x 8"H  
BK



**GL23S**  
Open, PAR36, 50W max., fixed light  
5.6" O.D. x 7"H  
BK



**GL70**  
Sealed, MR16 bi-pin base, 75W max.  
6.3" sq. x 6.2"H  
BK



**GL71**  
Sealed, PAR36, 50W max.  
6.3" sq. x 6.2"H  
BK

# Transformers and Cable

## Transformers

Our exclusive 12-volt dual-circuit transformers are available in 300- and 600-watt models. Each can be ordered with one of three different control systems: manual, photocell/time clock or photocell/time clock & rotary dimmer. A 300-watt direct burial transformer also is available.

## Luma® 10/3 Cable

Our No. 10 gauge, three-wire cable is UV stabilized and can be buried or left above ground. This heavy-duty self-sealing cable allows for longer runs without voltage drop.

## 12/2 Cable

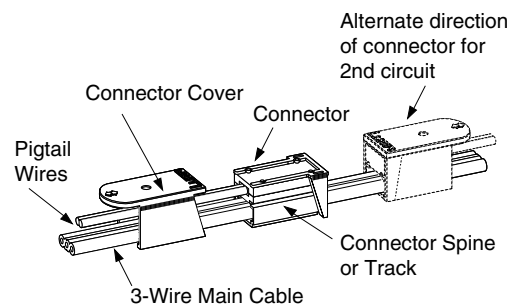
Intended for short-run projects where voltage drop is not a concern, 12/2 self-sealing cable is also available and offers an economical alternative to our premium 10/3 cable. Sold in 250-foot spools, the 12/2 cable comes with connector spines. Not for use with TRA1, TRA4, or TRA8.



**PC103C**  
BK, WH

**T024300**  
Standard

**TB24300**  
Direct Burial



Each fixture comes with a 5' pigtail wire and connector. Our patented connector allows for easy connections without cutting or splicing cable.

# LINE VOLTAGE

## Directional floodlights, Incandescent

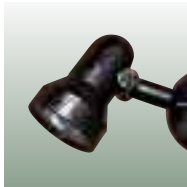
Directional Floodlights are available with incandescent lamps. Order lamp and Cast Junction Box Cover separately

### Surface mount

Flat profile



**DF1P20F-1**  
PAR20 through 50W  
3.3" O.D.  
BK, WH

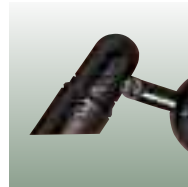


**DF1P30F-1**  
PAR30 through 75W  
4.4" O.D.  
BK, WH

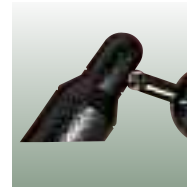


**DF1P38F-1**  
PAR38 through 150W  
5.5" O.D.  
BK, WH

Shrouded profile



**DF1P20S-1**  
PAR20 through 50W  
3.3" O.D.  
BK, WH



**DF1P30S-1**  
PAR30 through 75W  
4.4" O.D.  
BK, WH



**DF1P38S-1**  
PAR38 through 150W  
5.5" O.D.  
BK, WH

### In-ground mount

Flat profile

**DF1M16F-1**  
MR16 through 75W  
3.3" O.D.  
BK

**DF1P36F-1**  
PAR36 through 75W  
5.5" O.D.  
BK

Shrouded profile

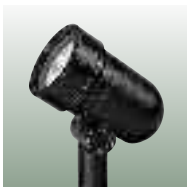
**DF1M16S-1**  
MR16 bi-pin through 75W  
3.3" O.D.  
BK

**DF1P36S-1**  
PAR36 through 75W  
5.5" O.D.  
BK

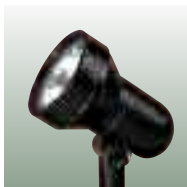
## Directional floodlights, Metal Halide PAR lamp included

### Surface mount

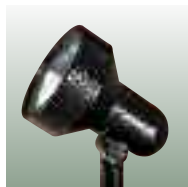
Flat profile, standard with flood lamp



**DFG703-DF**  
PAR20, 35W CMH  
3.3" O.D.  
BK, WH

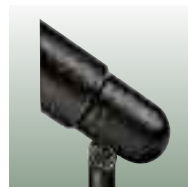


**DFH707-MF**  
PAR30, 70W CMH  
4.4" O.D.  
BK, WH



**DFJ410-MF**  
PAR38, 100W MH  
5.5" O.D.  
BK, WH

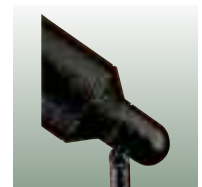
Shrouded profile, standard with spot lamp



**DFK703-DS**  
PAR20, 35W CMH  
3.3" O.D.  
BK, WH



**DFL707-MS**  
PAR30, 70W CMH  
4.4" O.D.  
BK, WH



**DFM410-MS**  
PAR38, 100W MH  
5.5" O.D.  
BK, WH

### In-ground mount

Flat profile, standard with flood lamp

**DFA703-DF**  
PAR20, 35W CMH  
3.3" O.D.  
BK

**DFB707-MF**  
PAR30, 70W CMH  
4.4" O.D.  
BK

**DFC410-MF**  
PAR38, 100W MH  
5.5" O.D.  
BK

Shrouded profile, standard with spot lamp

**DFD703-DS**  
PAR20, 35W CMH  
3.3" O.D.  
BK

**DFE707-MS**  
PAR30, 70W CMH  
4.4" O.D.  
BK

**DFF410-MS**  
PAR38, 100W MH  
5.5" O.D.  
BK

### Remote mount - Maximum ballast to lamp lead distance is 20 feet

Flat profile, standard with flood lamp

**DFQ410-MF**  
PAR38, 100W MH  
5.5" O.D.  
BK, WH

Shrouded profile, standard with spot lamp

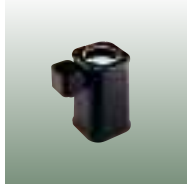
**DFT410-MS**  
PAR38, 100W MH  
5.5" O.D.  
BK, WH

### • Now Available:

Look for our parabolic-reflector version of the Directional Floodlight (DF Series), designed with the G12 metal halide lamp in 70 watts.

## Well lights, Incandescent

Order lamp separately



6.3" x 9.7" x 9.5"

**DU107M16-1**  
MR16 through 75W  
BK

**DU107P36-1**  
PAR36 through 75W  
BK

**DU115P38-1**  
PAR20/30/38 through 150W  
BK

- **Now Available:**

Look for our parabolic-reflector version of the Sealed Well Light (DU Series), designed with the G12 metal halide lamp in 70 watts.

- **Colorfast DeltaGuard®**

The exclusive *Colorfast DeltaGuard* finish protects the attractive appearance of Ruud Lighting landscape products. The E-coat epoxy primer and the baked-on ultra-durable powder topcoat finish is warranted for seven years.

- **Web Sites:**

*Landscape Family*  
[www.ruudlighting.com/literature/landscape\\_family.asp](http://www.ruudlighting.com/literature/landscape_family.asp)

*Design & Installation Guide*  
[www.ruudlighting.com/landscape/5\\_Step.asp](http://www.ruudlighting.com/landscape/5_Step.asp)

*Canada*  
[www.ruud.ca](http://www.ruud.ca)



**Dependability... DIRECT!**

©2008 Ruud Lighting Inc.  
• Printed in U.S.A.  
• FG# CAT/BRCH-LAND

## Well lights, HID PAR

Lamp included



6.3" x 9.7" x 17.6"

**DU703P30-D(a);**  
(a) Specify **S** for spot or **F** for flood, PAR30, 35W CMH  
BK

**DU707P30-M(a);**  
(a) Specify **S** for spot or **F** for flood, PAR30, 70W CMH  
BK

**DU407P38-M(a);**  
(a) Specify **S** for spot, **F** for flood or **W** for wide flood, PAR38, 70W MH  
BK

**DU410P38-M(a);**  
(a) Specify **S** for spot, **F** for flood or **W** for wide flood, PAR38, 100W MH  
BK

## Well lights, HID

Symmetric Reflector - Lamp included

**DU405SYM-M**  
ED17, 50W MH  
BK

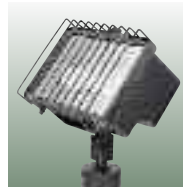
**DU505SYM-D**  
ED17, 50W HPS  
BK

**DU410SYM-M**  
ED17, 100W MH  
BK

**DU510SYM-M**  
ED17, 100W HPS  
BK

## Micro floods, Fluorescent

Lamp included

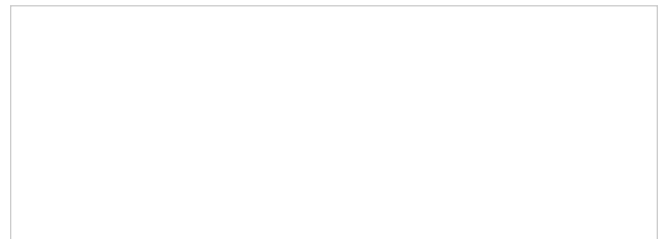


\*Wire Guard optional

**\*NS6213-UL**  
Electronic ballast  
Fluorescent 13W,  
lamp included  
9.8" x 6.3"  
BK

**\*NS6226-UL**  
Electronic ballast  
Fluorescent 26W,  
lamp included  
9.8" x 6.3"  
BK

**Accessories and larger HID Floodlights are also available. For more information, please contact:**



### PRODUCT CHANGES

We reserve the right to make modifications or changes to any of our products without prior notice and without incurring obligation. Ruud and Colorfast DeltaGuard are registered trademarks of Ruud Lighting Inc.